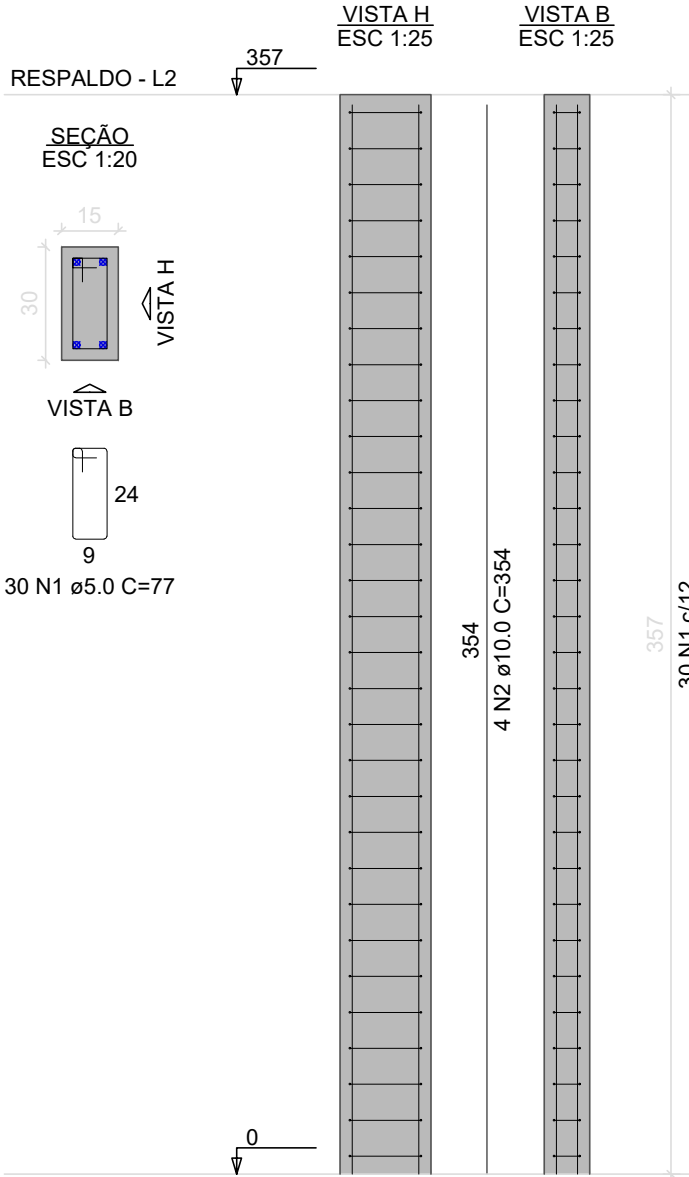


P1=P2=P3=P4=P5=P6=  
=P7=P8=P9=P10=P11=  
=P12=P13=P14=P15=  
=P16=P17=P18=P19=  
=P20=P21



RELAÇÃO DO AÇO

21xP1

AÇO	N	DIAM (mm)	QUANT	C.TOTAL (cm)	C.TOTAL (cm)
CA50	1	5.0	630	77	48510
CA50	2	10.0	84	354	29736

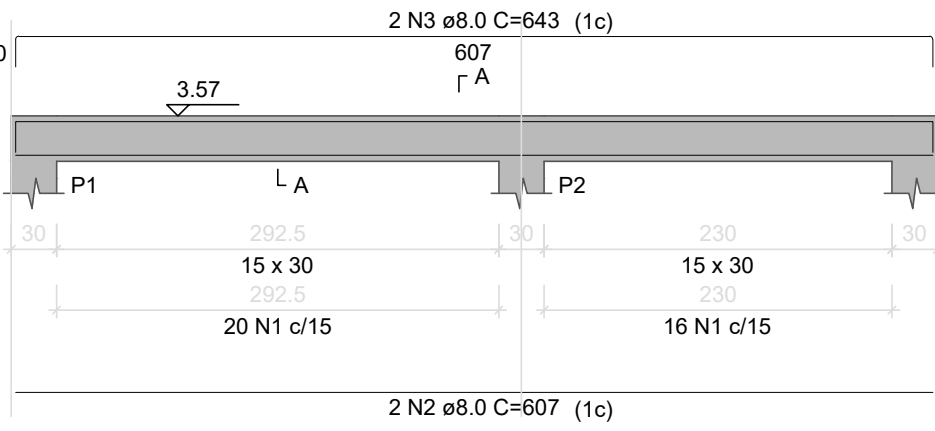
RESUMO DO AÇO

AÇO	DIAM (mm)	C.TOTAL (m)	PESO + 0% (kg)
CA50	10.0	297.4	183.3
CA60	5.0	485.1	74.8
PESO TOTAL (kg)			
CA50		183.3	
CA60		74.8	

Volume de concreto (C-25) = 3.37 m³  
Área de forma = 67.47 m²

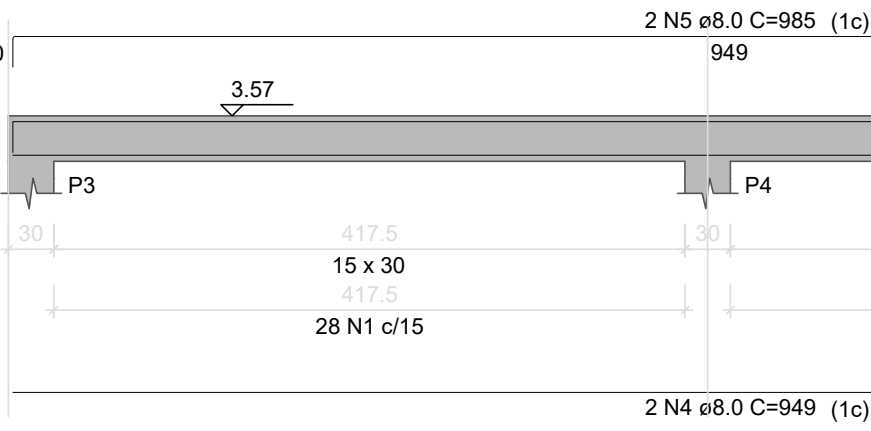
VR1

ESC 1:50



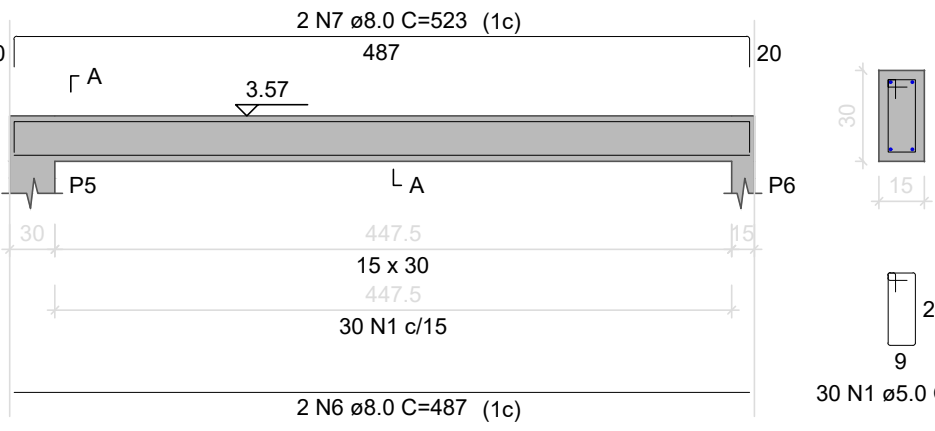
VR2

ESC 1:50



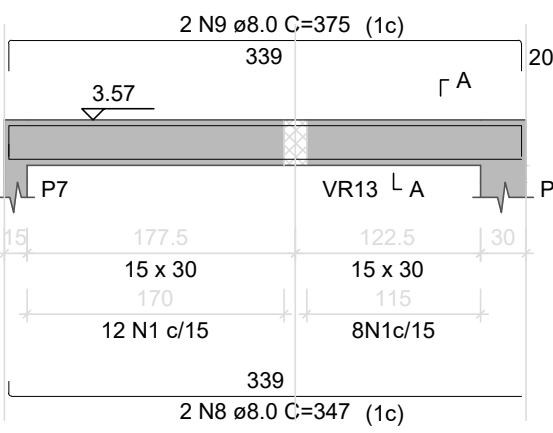
VR3

ESC 1:50



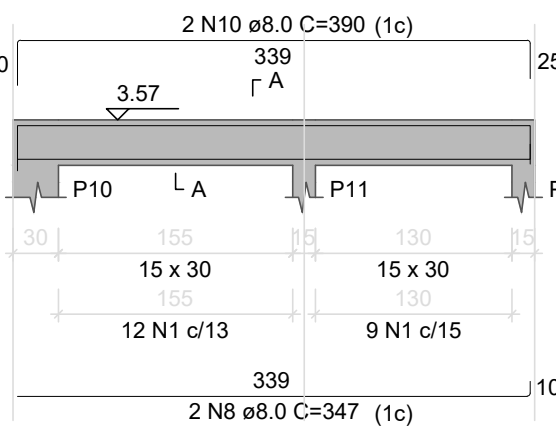
VR4

ESC 1:50



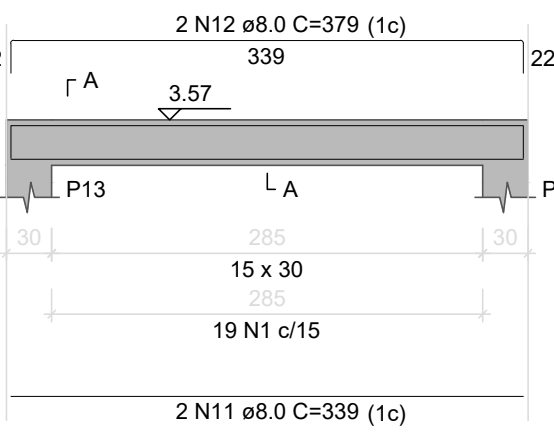
VR5

ESC 1:50



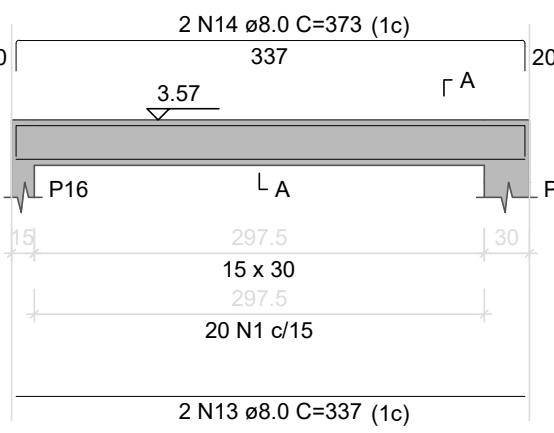
VR6

ESC 1:50



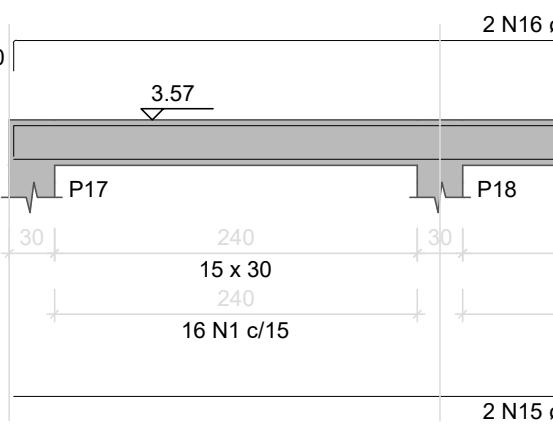
VR7

ESC 1:50



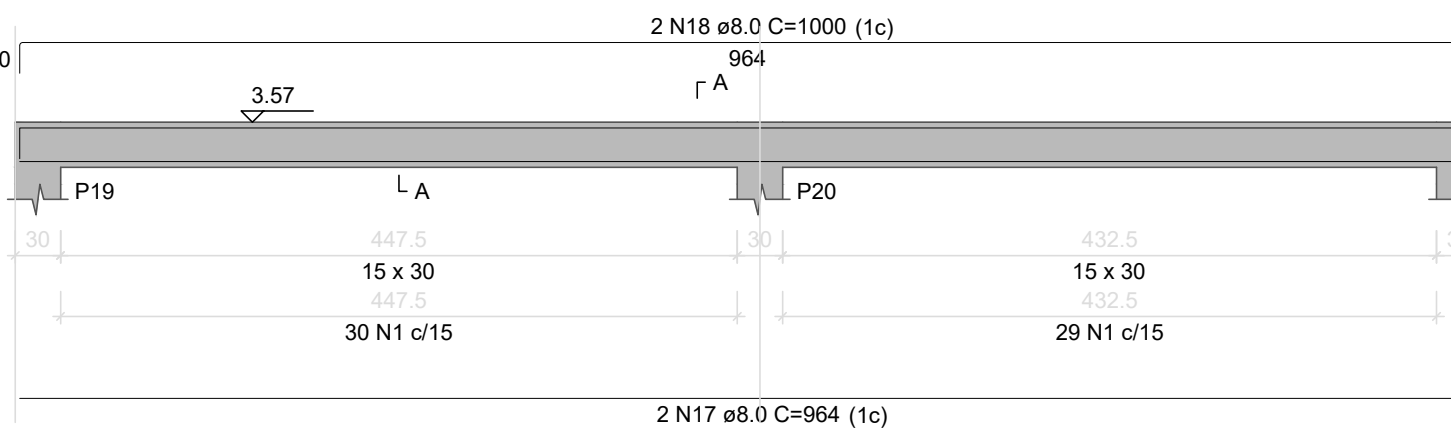
VR8

ESC 1:50



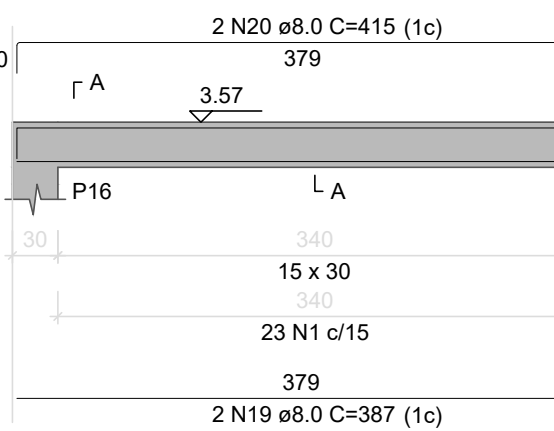
VR9

ESC 1:50



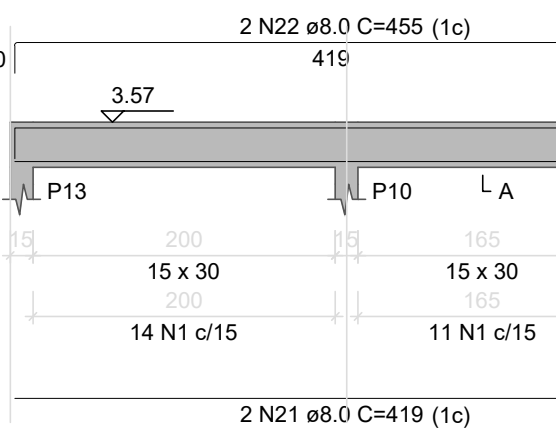
VR10

ESC 1:50



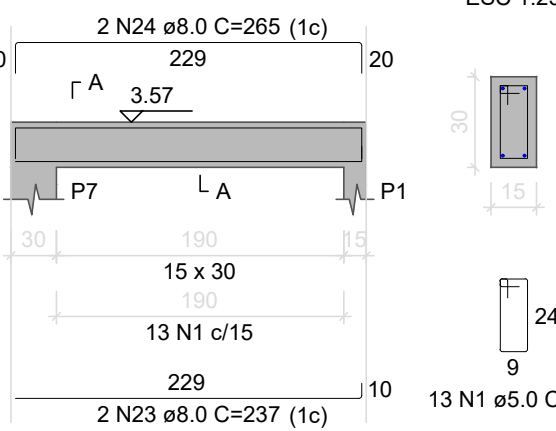
VR11

ESC 1:50



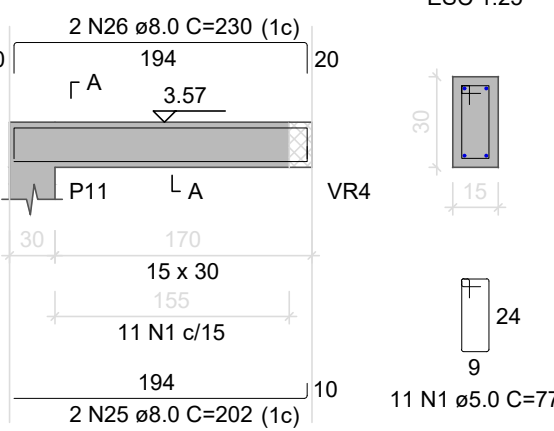
VR12

ESC 1:50



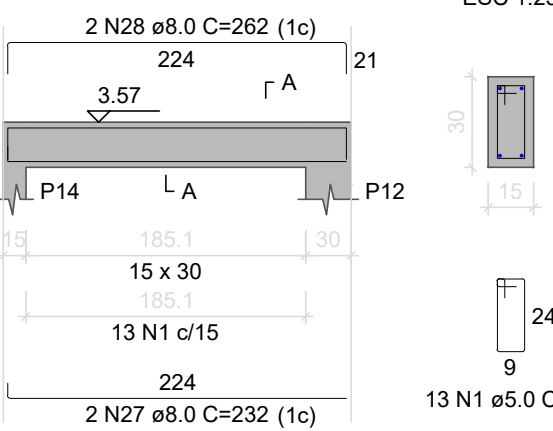
VR13

ESC 1:50



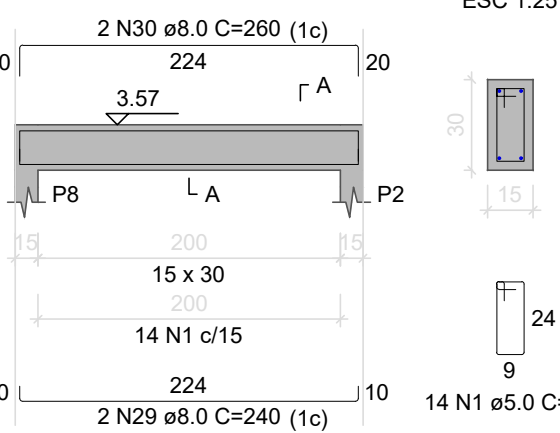
VR14

ESC 1:50



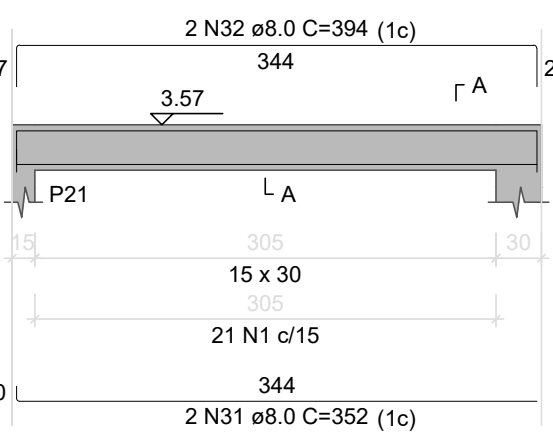
VR15

ESC 1:50



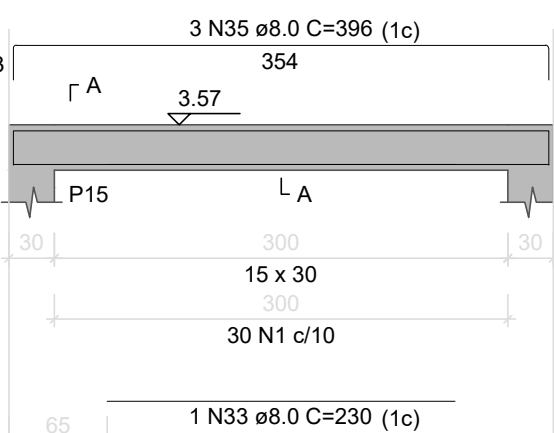
VR16

ESC 1:50



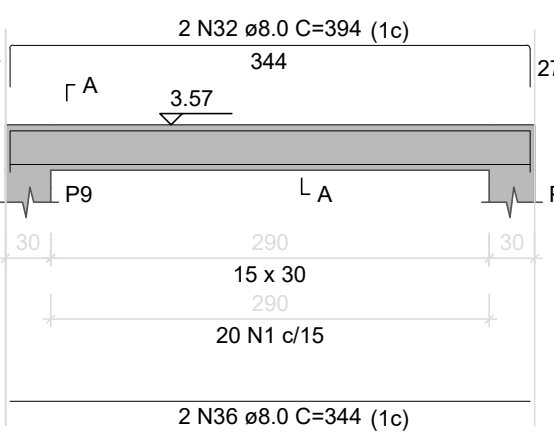
VR17

ESC 1:50



VR18

ESC 1:50



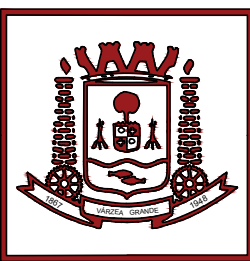
RELAÇÃO DO AÇO

AÇO	N	DIAM (mm)	QUANT	C.TOTAL (cm)	C.TOTAL (cm)
CA50	1	5.0	477	77	36729
CA50	2	8.0	607	1214	
CA50	3	8.0	643	1286	
CA50	4	8.0	348	1898	
CA50	5	8.0	985	1970	
CA50	6	8.0	487	974	
CA50	7	8.0	523	1046	
CA50	8	8.0	347	1388	
CA50	9	8.0	375	750	
CA50	10	8.0	390	780	
CA50	11	8.0	330	675	
CA50	12	8.0	379	758	
CA50	13	8.0	337	674	
CA50	14	8.0	373	746	
CA50	15	8.0	742	1484	
CA50	16	8.0	778	1556	
CA50	17	8.0	964	1928	
CA50	18	8.0	1000	2000	
CA50	19	8.0	387	774	
CA50	20	8.0	415	830	
CA50	21	8.0	419	838	
CA50	22	8.0	455	910	
CA50	23	8.0	237	474	
CA50	24	8.0	265	530	
CA50	25	8.0	202	404	
CA50	26	8.0	230	460	
CA50	27	8.0	232	464	
CA50	28	8.0	262	524	
CA50	29	8.0	240	480	
CA50	30	8.0	260	520	
CA50	31	8.0	352	704	
CA50	32	8.0	394	1576	
CA50	33	8.0	230	230	
CA50	34	8.0	354	708	
CA50	35	8.0	395	1188	
CA50	36	8.0	344	688	

RESUMO DO AÇO

AÇO	DIAM (mm)	C.TOTAL (m)	PESO + 0% (kg)
CA50	8.0	334.3	131.9
CA60	5.0	367.3	56.6
PESO TOTAL (kg)			
CA50		131.9	
CA60		56.6	

Volume de concreto (C-25) = 3.00 m³  
Área de forma = 49.93 m²



PREFEITURA MUNICIPAL DE  
**VÁRZEA GRANDE**

PROJETO: **PROJETO DE ESTRUTURA DE CONCRETO ARMADO**

CENTRO DE MÚLTIPLO USO - SÃO BENEDITO

PROPRIETÁRIO:  
PREFEITURA DE VÁRZEA GRANDE

LOCAL:  
BAIRRO RESIDENCIAL SÃO BENEDITO

AUTORES DO PROJETO:  
SUSAN KAREN BOTELHO MORAES  
CREAMT: 32806

ASSINATURA:

RESPONSÁVEL PELA EXECUÇÃO:

ASSINATURA:

QUADRO DE ÁREAS:  
ÁREA DO TERRENO: 1496,28 m²  
ÁREA CONSTRUÍDA: 200,00 m²  
ÁREA DE COBERTURA: 257,92 m²  
ÁREA PERMEÁVEL: 1238,36 m²

INDICADA

ABRIL/2024

REV. 01

TÍTULO: PROJETO DE EXECUÇÃO DO CENTRO DE MÚLTIPLO USO DO RES. SÃO BENEDITO  
ETAPA: PROJETO EXECUTIVO  
ASSUNTO: DETALHAMENTO DE VIGAS DE RESPALDO

FOLHA Nº

5/7