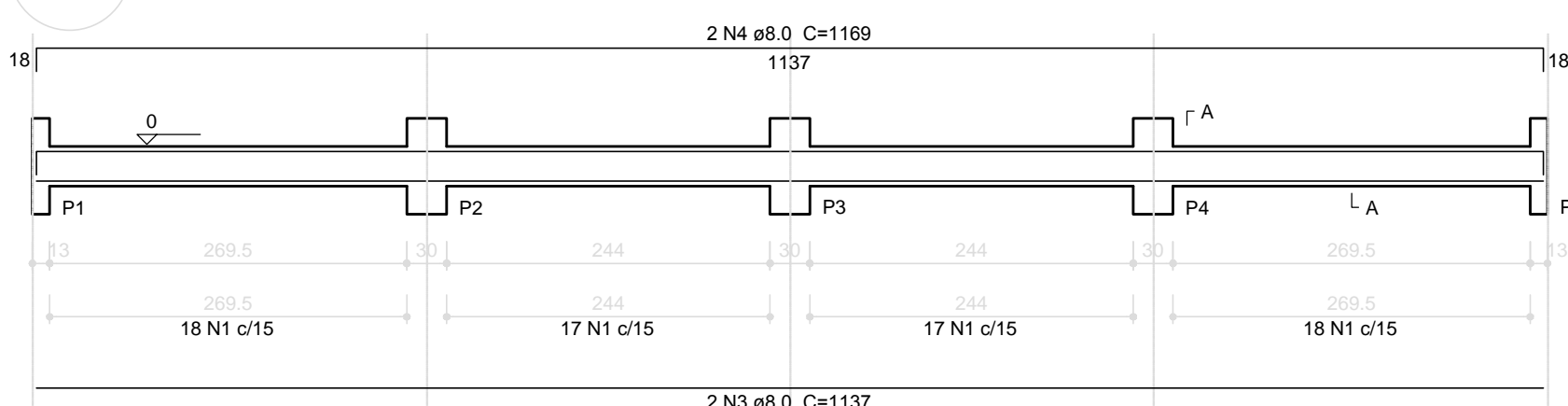
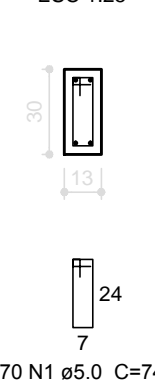
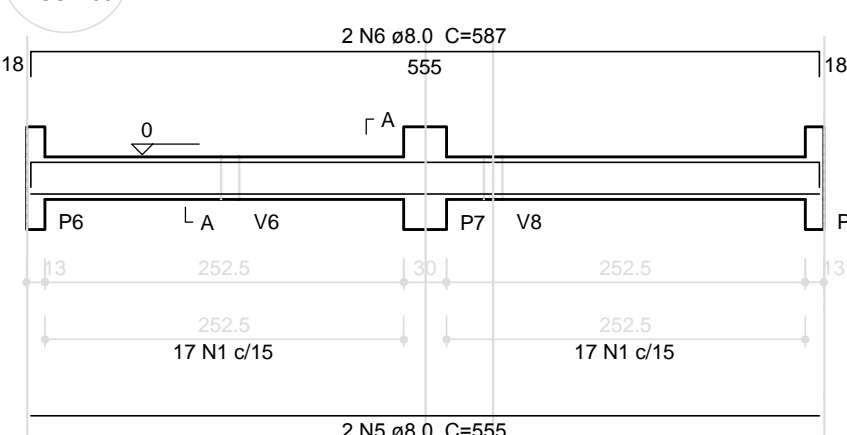
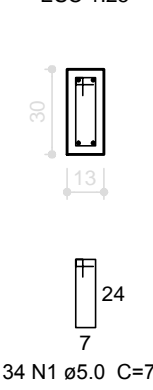
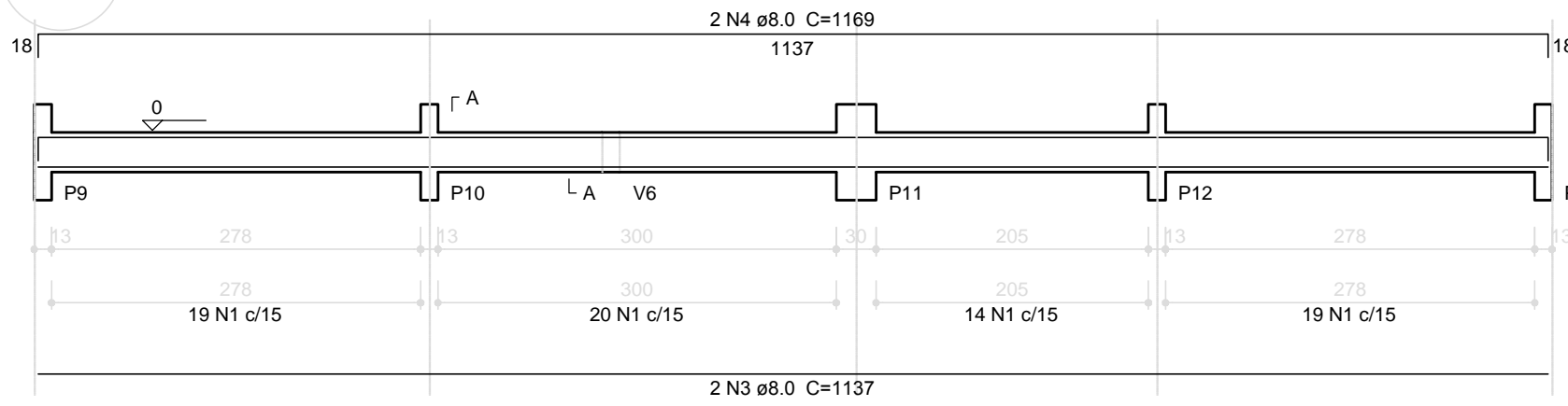
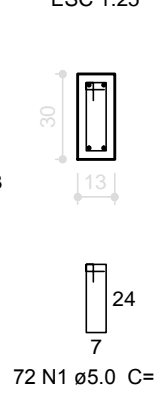
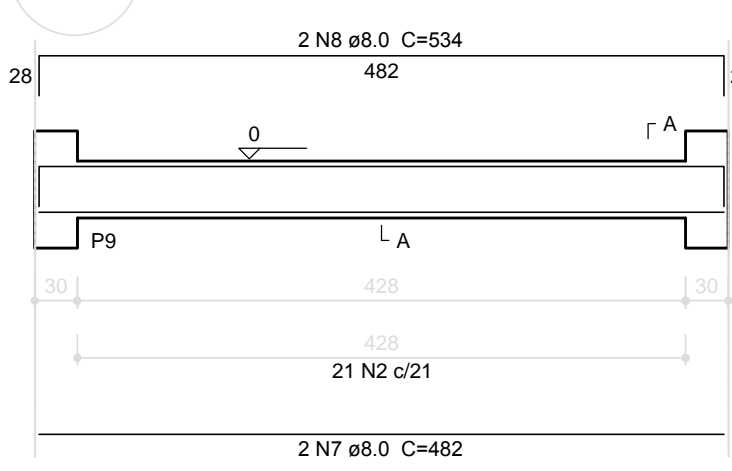
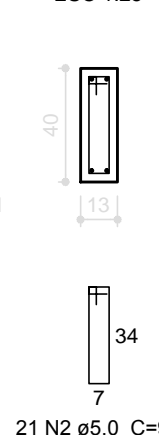
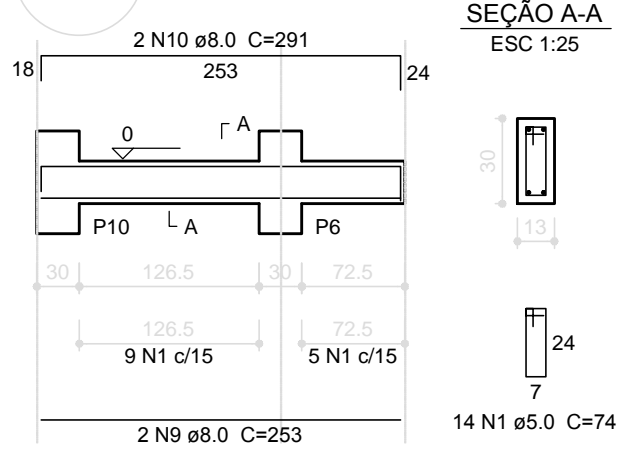
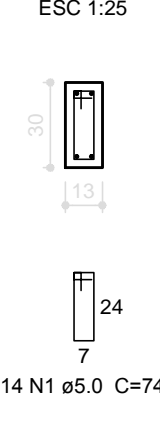
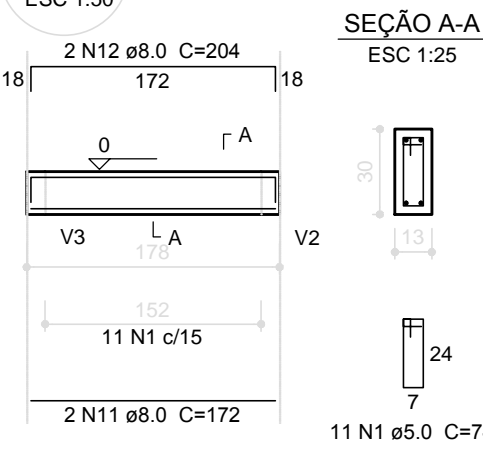
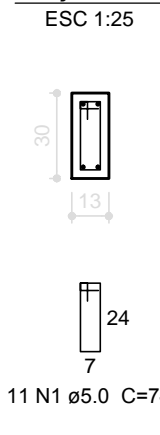
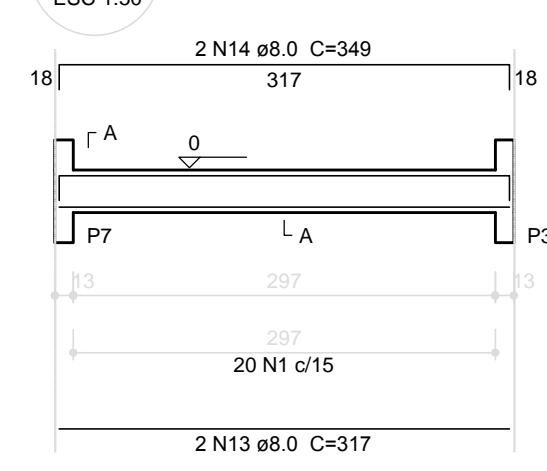
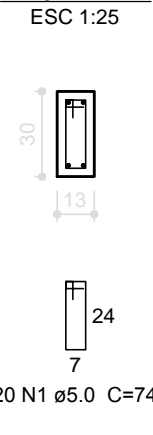
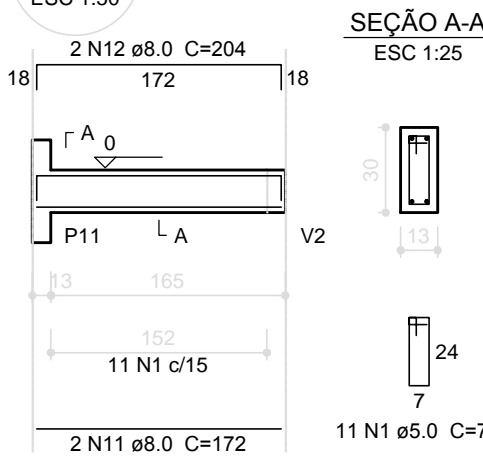
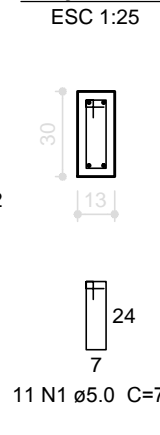
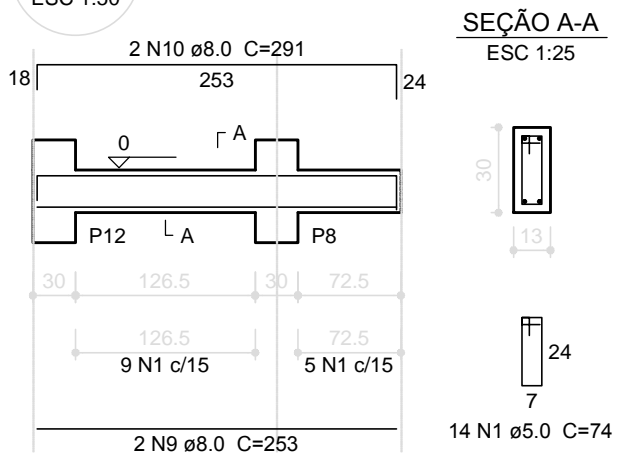
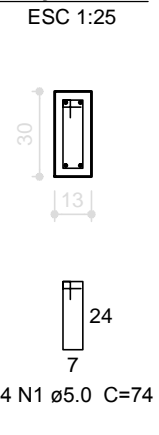


V1  
ESC 1:50SEÇÃO A-A  
ESC 1:25V2  
ESC 1:50SEÇÃO A-A  
ESC 1:25V3  
ESC 1:50SEÇÃO A-A  
ESC 1:25V4  
ESC 1:50SEÇÃO A-A  
ESC 1:25V5  
ESC 1:50SEÇÃO A-A  
ESC 1:25V6  
ESC 1:50SEÇÃO A-A  
ESC 1:25V7  
ESC 1:50SEÇÃO A-A  
ESC 1:25V8  
ESC 1:50SEÇÃO A-A  
ESC 1:25V9  
ESC 1:50SEÇÃO A-A  
ESC 1:25

Relação do aço

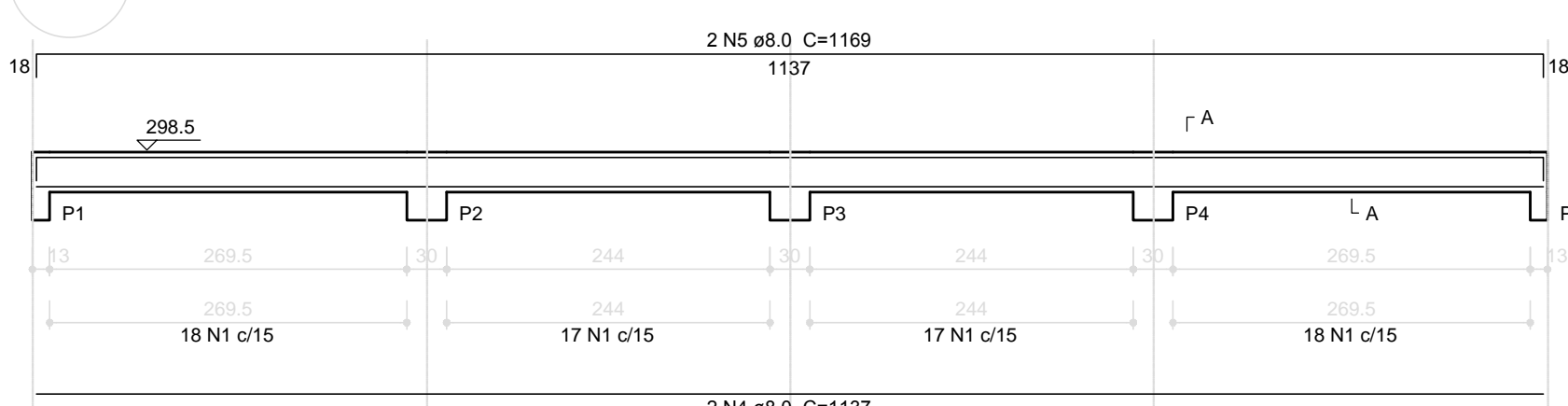
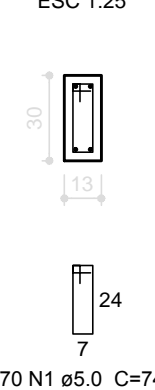
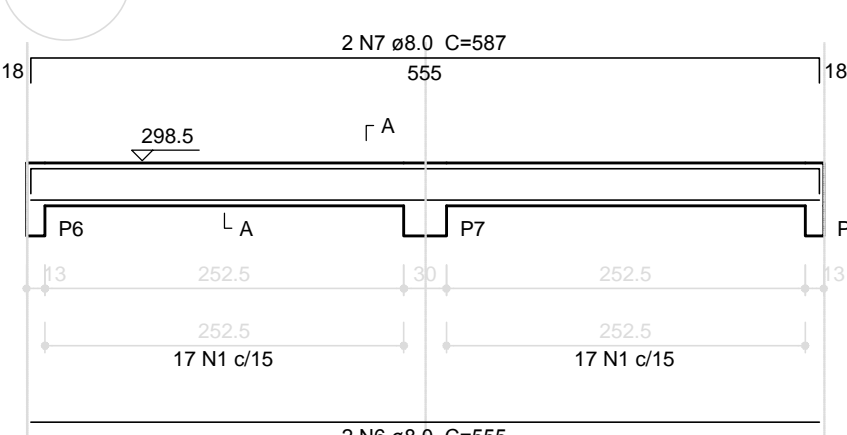
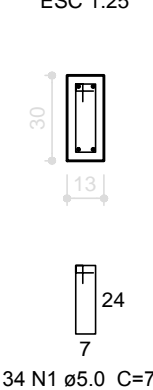
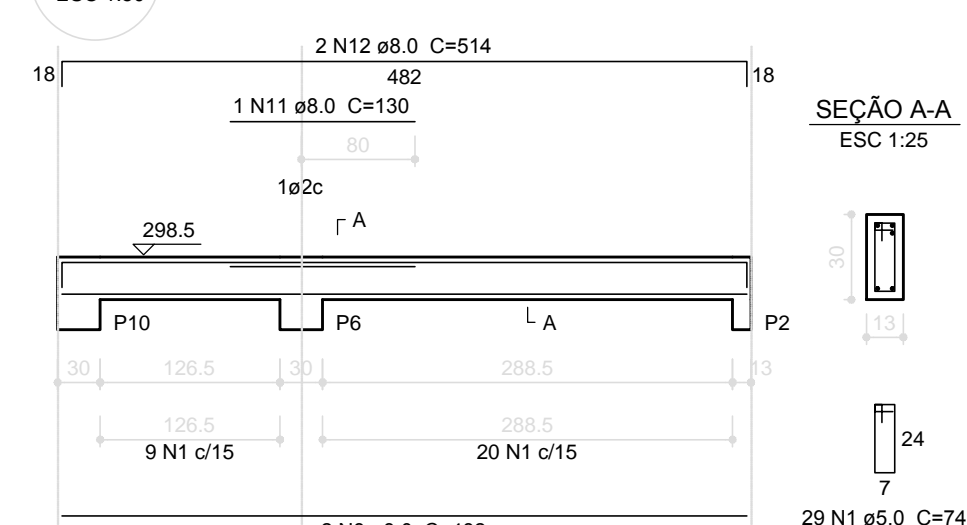
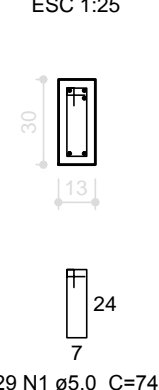
AÇO	N	DIAM (mm)	QUANT (Barras)	UNIT (cm)	C.TOTAL (cm)
CA60	1	5.0	246	74	18204
CA50	2	5.0	42	94	3948
	3	8.0	4	1137	4548
	4	8.0	4	1169	4676
	5	8.0	2	555	1110
	6	8.0	2	587	1174
	7	8.0	4	482	1928
	8	8.0	4	534	2136
	9	8.0	4	253	1012
	10	8.0	4	291	1164
	11	8.0	4	172	688
	12	8.0	4	204	816
	13	8.0	2	317	634
	14	8.0	2	349	698

Resumo do aço

AÇO	DIAM (mm)	C.TOTAL (m)	PESO + 10 % (kg)
CA50	8.0	205.9	89.3
CA60	5.0	221.6	37.6
PESO TOTAL (kg)			
CA50		89.3	
CA60		37.6	

Volume de concreto (C-25) = 2.08 m³  
Área de forma = 38.6 m²

## 1 VIGAS NÍVEL 000 ESCALA: INDICADA

V1  
ESC 1:50SEÇÃO A-A  
ESC 1:25V2  
ESC 1:50SEÇÃO A-A  
ESC 1:25V5  
ESC 1:50SEÇÃO A-A  
ESC 1:25

Relação do aço

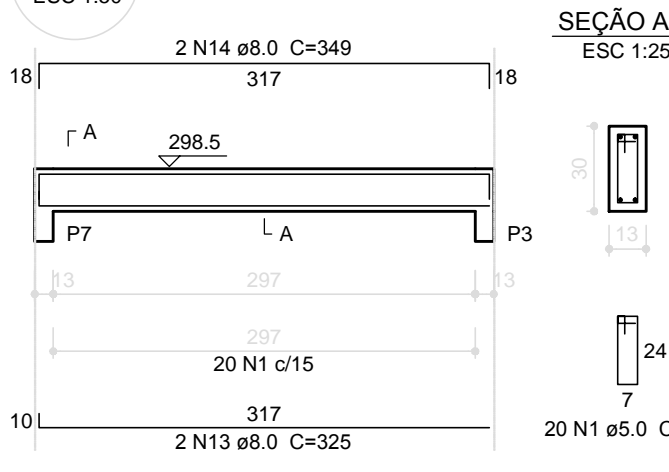
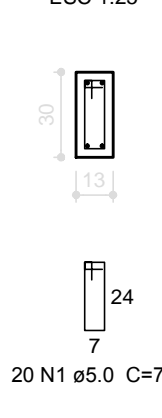
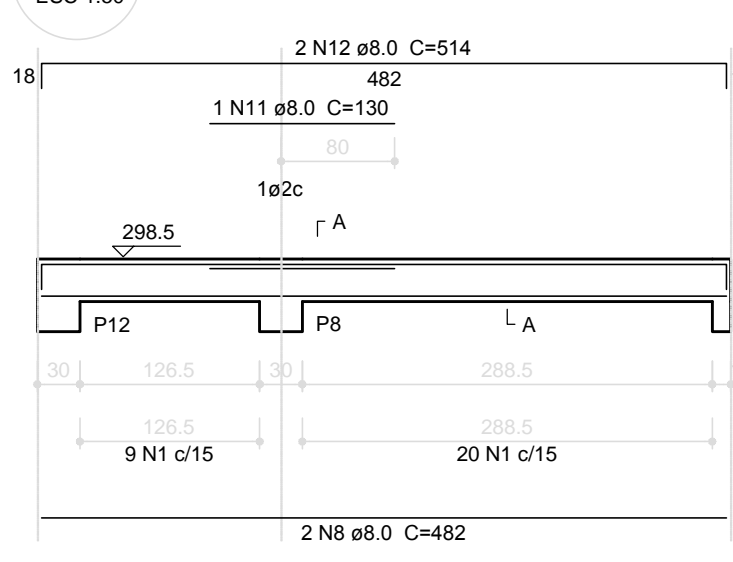
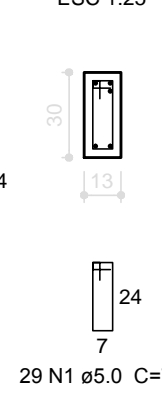
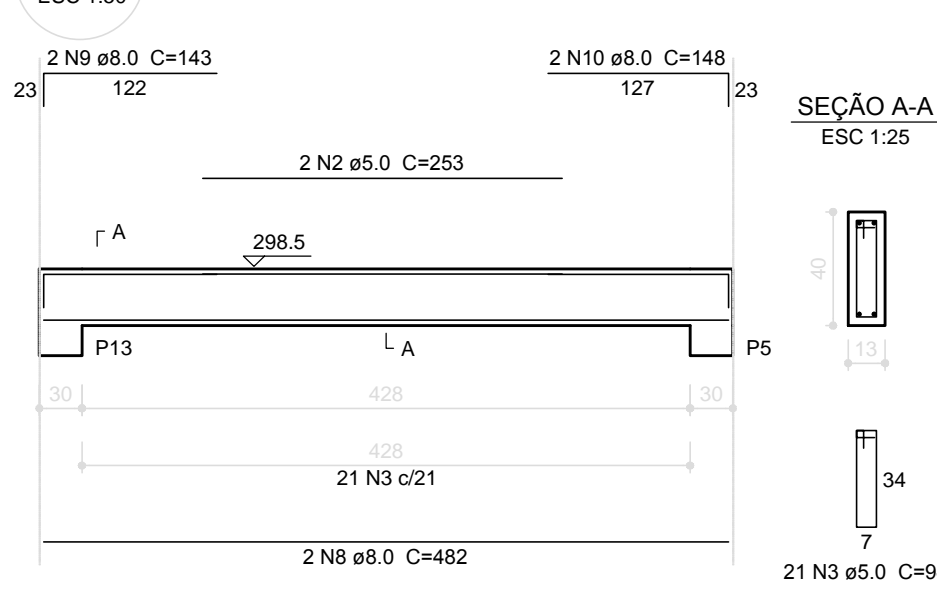
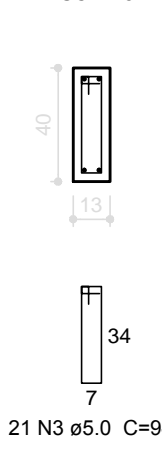
AÇO	N	DIAM (mm)	QUANT (Barras)	UNIT (cm)	C.TOTAL (cm)
CA60	1	5.0	254	74	18796
	2	5.0	4	253	1012
	3	5.0	42	94	3948
CA50	4	8.0	4	1137	4548
	5	8.0	4	1169	4676
	6	8.0	2	555	1110
	7	8.0	2	587	1174
	8	8.0	8	482	3856
	9	8.0	4	143	572
	10	8.0	4	148	592
	11	8.0	2	130	260
	12	8.0	4	514	2056
	13	8.0	2	325	650
	14	8.0	2	349	698

Resumo do aço

AÇO	DIAM (mm)	C.TOTAL (m)	PESO + 10 % (kg)
CA50	8.0	202	87.6
CA60	5.0	237.6	40.3
PESO TOTAL (kg)			
CA50		87.6	
CA60		40.3	

Volume de concreto (C-25) = 2.12 m³  
Área de forma = 39.34 m²

## 2 VIGAS NÍVEL 298.5 ESCALA: INDICADA

V6  
ESC 1:50SEÇÃO A-A  
ESC 1:25V7  
ESC 1:50SEÇÃO A-A  
ESC 1:25V8  
ESC 1:50SEÇÃO A-A  
ESC 1:25

<b>FNDE</b> <small>Fundo Nacional de Desenvolvimento da Educação</small>		<b>Ministério da Educação</b>		<b>GOVERNO FEDERAL</b> <b>BRASIL</b> <small>PAÍS RICO E PAÍS SEM POBREZA</small>	
<b>PROJETO PADRÃO - FNDE</b>					
MUNICÍPIO - UF:					
PROPRIETÁRIO:					
ENDEREÇO:					
PROPRIETÁRIO					
RESP. TÉCNICO CAU/ CREA					
DLFO		CAU/ CREA			
		RA			
OBSERVAÇÕES:					
<b>ESCOLA 6 SALAS DE AULA</b>					
<b>PROJETO DE ESTRUTURA</b>					
COORDENAÇÃO CGEST - Coordenação Geral de Infraestrutura Educacional		VIGAS NÍVEIS 000 E 298.5 (VESTIÁRIO QUADRA COBERTA)		SCV	
FORMATO A1 (841x594)		REVISÃO R.00		ESCALA INDICADA DATA EMISSÃO FEVEREIRO/2014	
				PRANCHA 26/32	