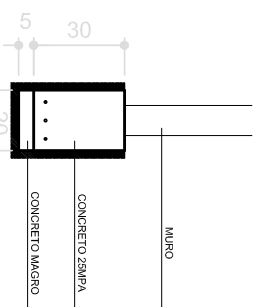


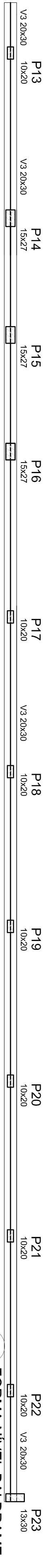
Vigas			
Nome	Seção (cm)	Elevação (cm)	Nível (cm)
V1	20x30	0	0
V2	20x30	0	0
V3	20x30	0	0
V4	20x30	0	0
V5	20x30	0	0

### Características dos materiais

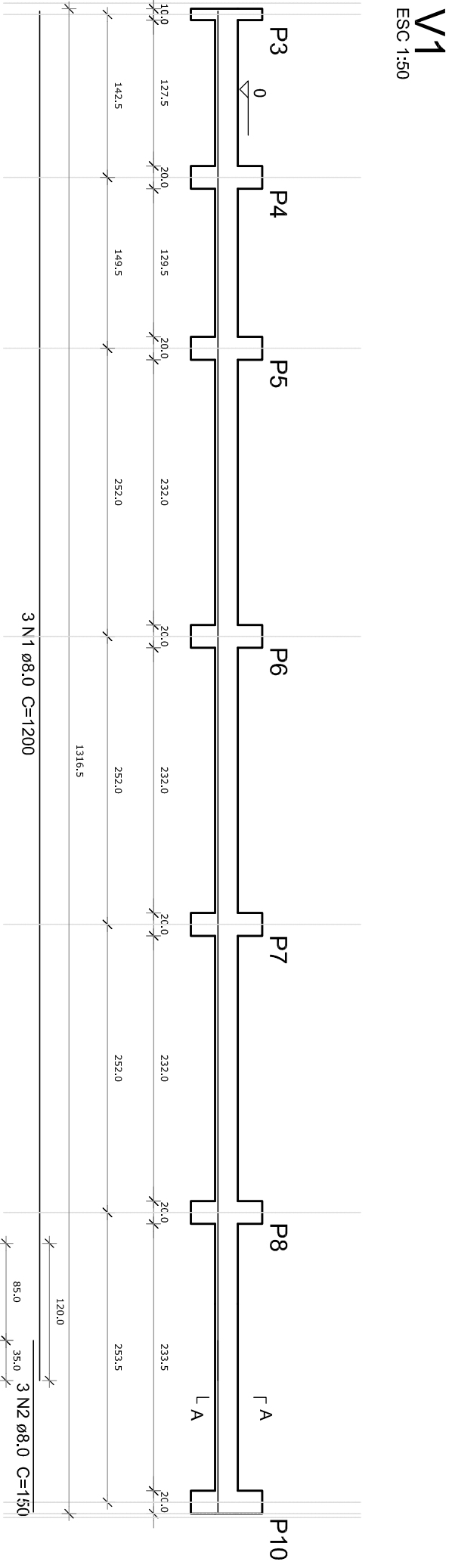
fck (kgf/cm <sup>2</sup> )	Ecs (kgf/cm <sup>2</sup> )
250	238000



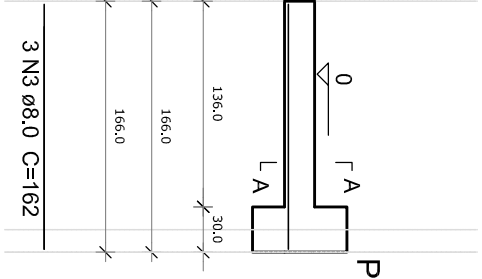
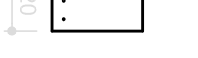
SEÇÃO A-A



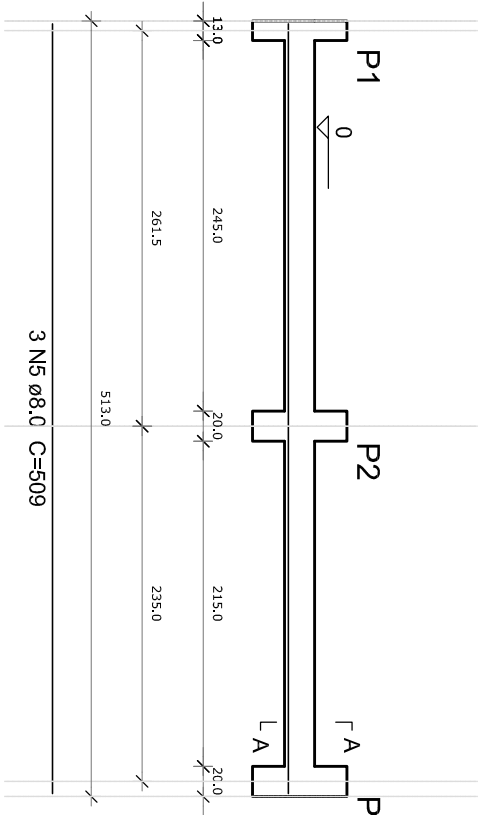
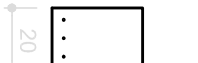
FORMA NÍVEL BALDRAME  
ESCALA 1/50



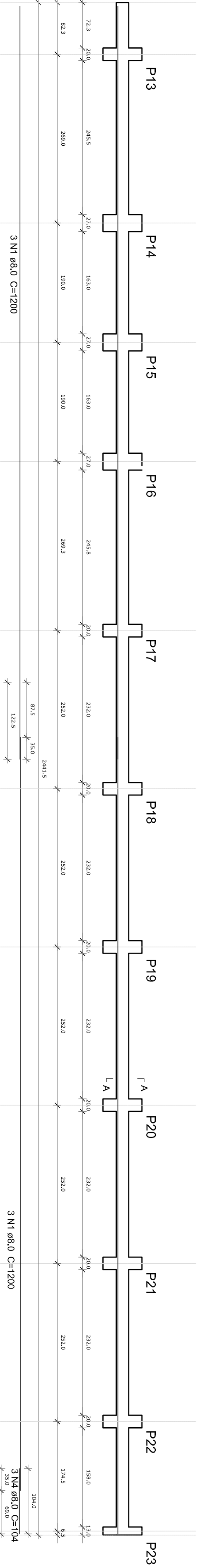
## SEÇÃO A-A



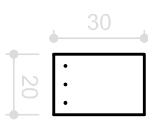
## SEÇÃO A-A



## SEÇÃO A-A



SEÇÃO A-A



**2**  
**VIGAS NIVEL BALDRAME**  
**ESCALA INDICADA**

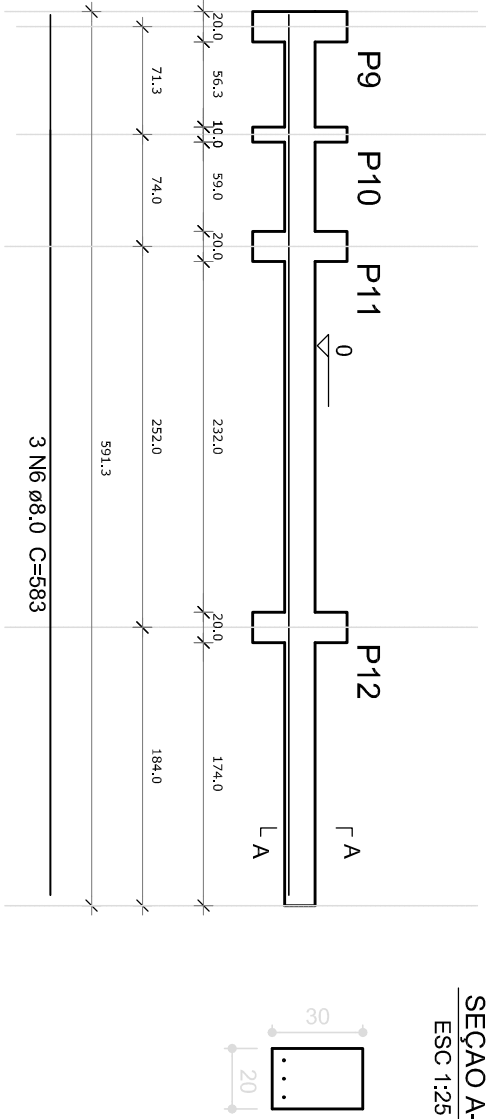
ACO	DIAM (mm)	C.TOTAL (m)	PESO (kg)
CA50	8.0	153.2	60.5

## Resumo do aço Vigas

(kg)	
CA50	59.6

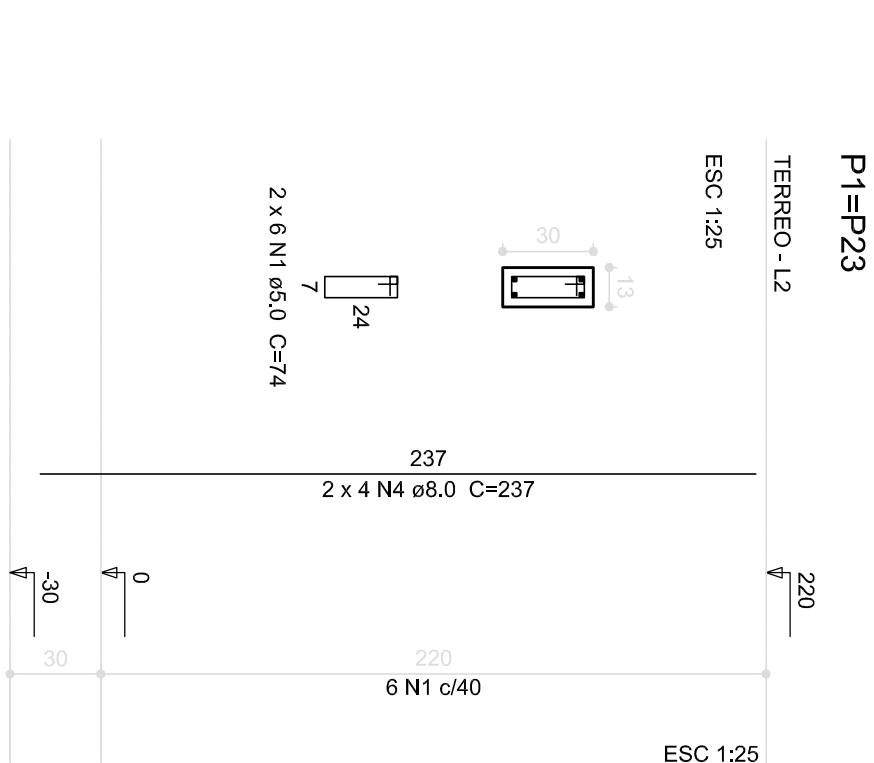
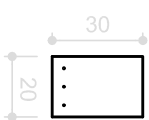
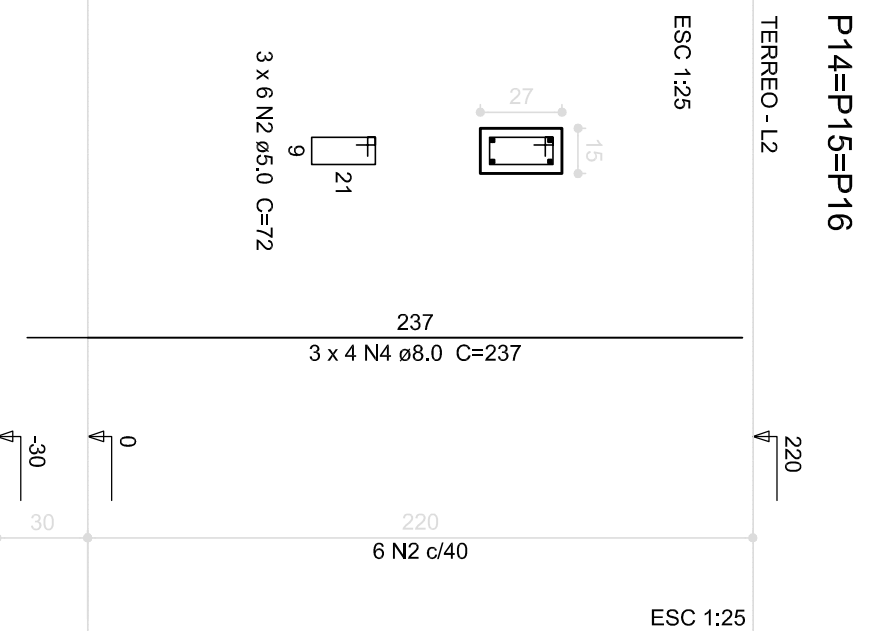
Volume de concreto (C-25) = 3.01 m<sup>3</sup>

Área de forma = 30.11 m<sup>2</sup>

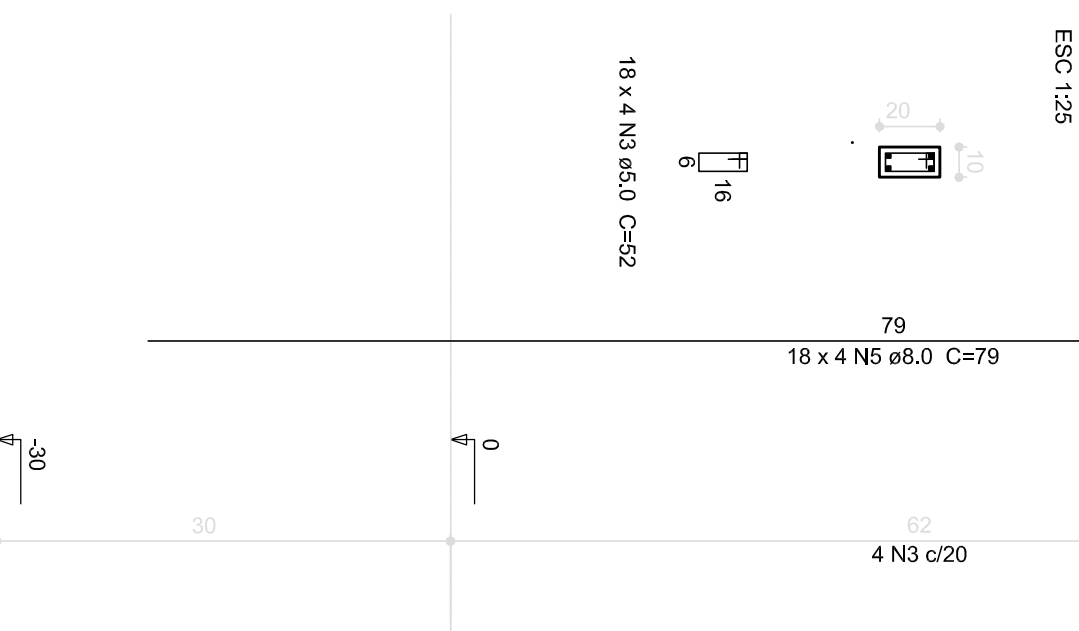


SEÇÃO A-A

ESC 1:25


$$P_1 = P_{23}$$


P14=P15=P16



ESC 1:25

## Resumo do aço Pilares

	DIAM (mm)	C.TOTAL (m)	PESO (kg)
AÇO			
CA50	8.0	104.3	41.2
CA60	5.0	59.3	13.2
PESO TOTAL (kg)			
CA50			41.2
CA60			13.2

Volume de concreto (C-25) = 0.66 m<sup>3</sup>

Área de forma = 16.02 m<sup>2</sup>

[illegible][illegible]