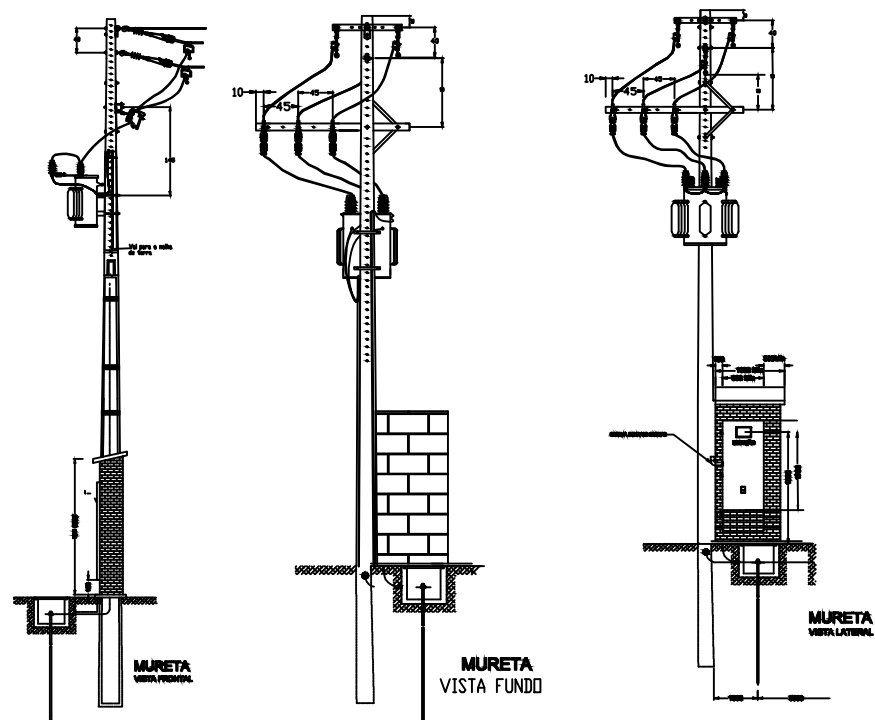
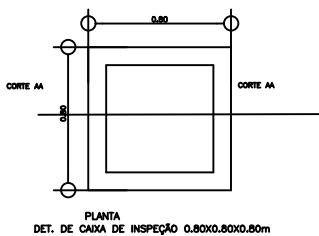
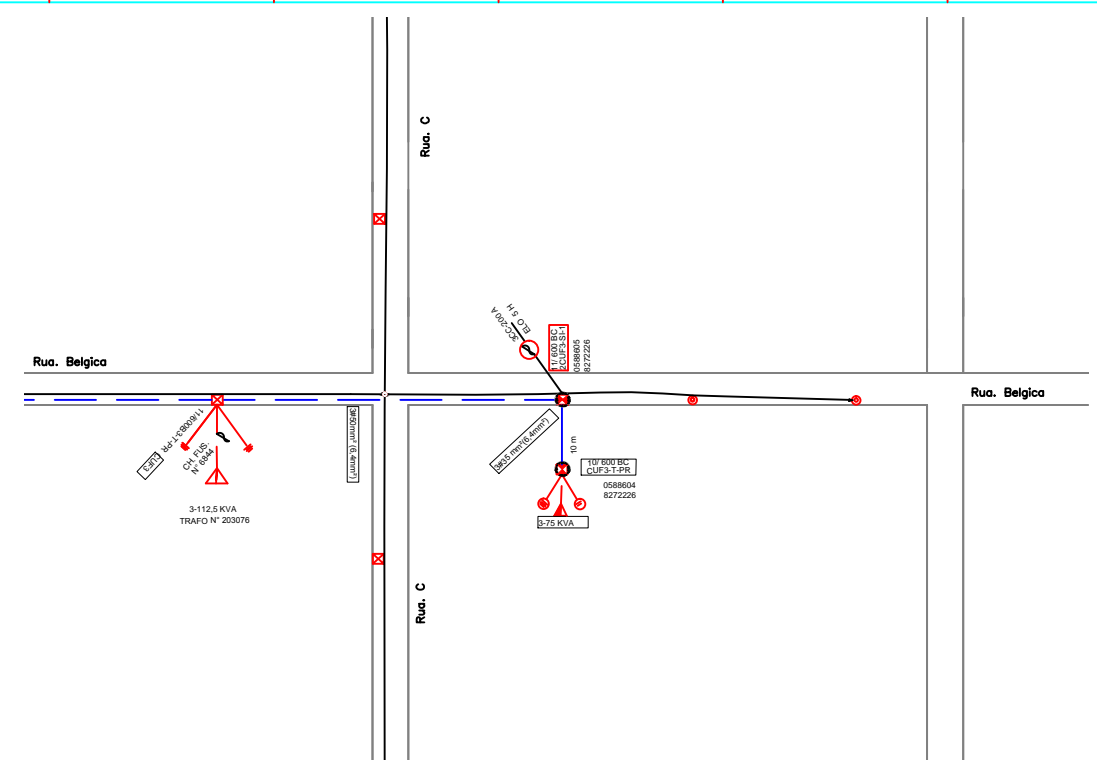


1 2 3 4 5 6 7 8 9 10 11 12

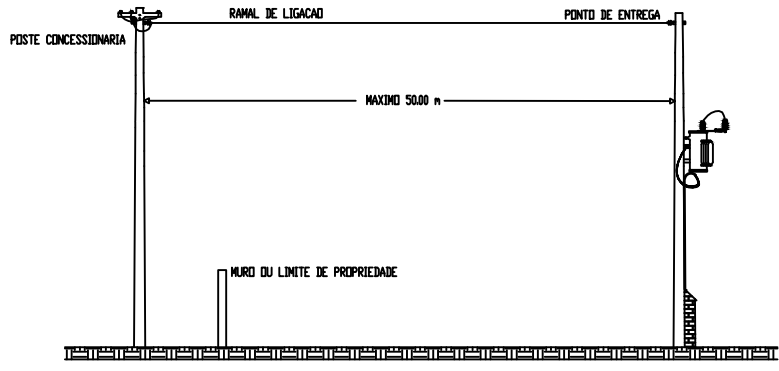
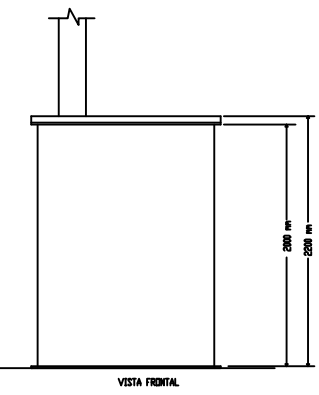
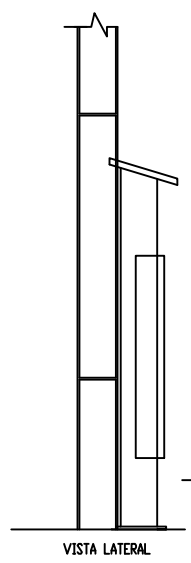
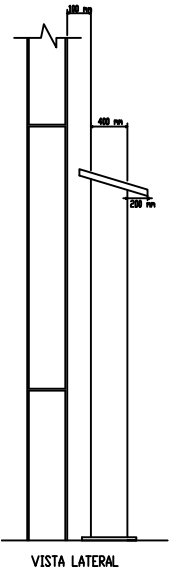
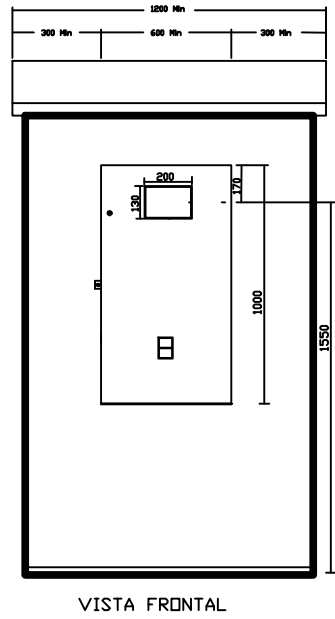
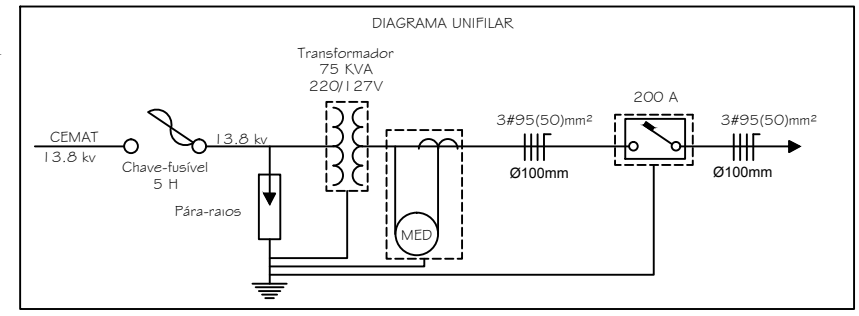
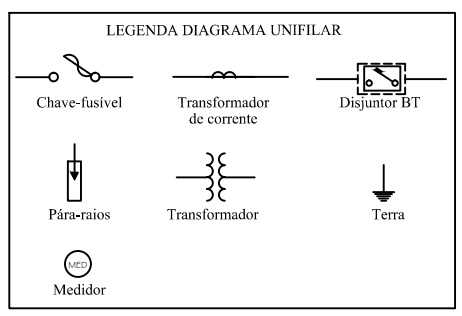
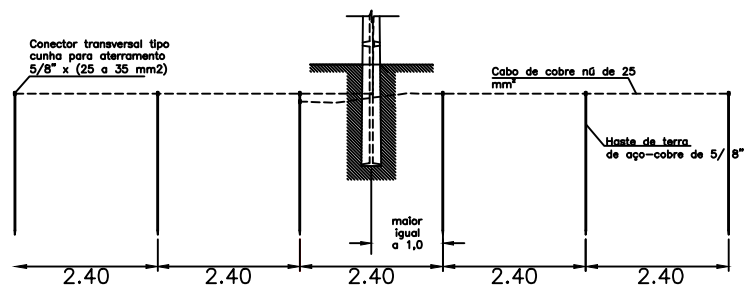
A
B
C
D
E
F
G
H
I
L



LEGENDA	
	Poste Circular instalado
	Poste Circular a instalar
	Poste Duplo "T" instalado Concreto
	Poste Duplo "T" a instalar
	Transformador instalado
	Transformador a instalar
	Chave Elo-Fusível instalada
	Chave Elo-Fusível a instalar
	Para-raio a instalar
	Para-raio a instalar
	Aterramento instalado
	Rede de Baixa Tensão
	Rede de Alta Tensão
	Estrutura Existente
	Estrutura a ser Retirada
	Estrutura a ser Instalada
	11/300 Indicação a Altura e Esforço do Poste
	Quadro Geral de Distribuição



DETALHE MALHA DE ATERRAMENTO



EMEB DEP. ARY LEITE DE CAMPOS	
OBRA:	PROJETO ELÉTRICO
PROPRIETÁRIO:	PREFEITURA MUNICIPAL DE VÁRZEA GRANDE CNPJ: 03.507.548/0001-10
LOCALIZAÇÃO:	RUA: Belgica Bairro: Mangabeiras Município de Várzea Grande/MT
AUTOR DO PROJETO:	
ASSUNTO / CONTEÚDO:	PROJETO DE REDE DISTRIBUICAO URBANA COM INSTALACAO DE POSTO DE TRANSFORMACAO DE 75 KVA-13,8 KV-220 / 127 V
ESCALA:	INDICADA
DATA:	JULHO/2017
01/01	