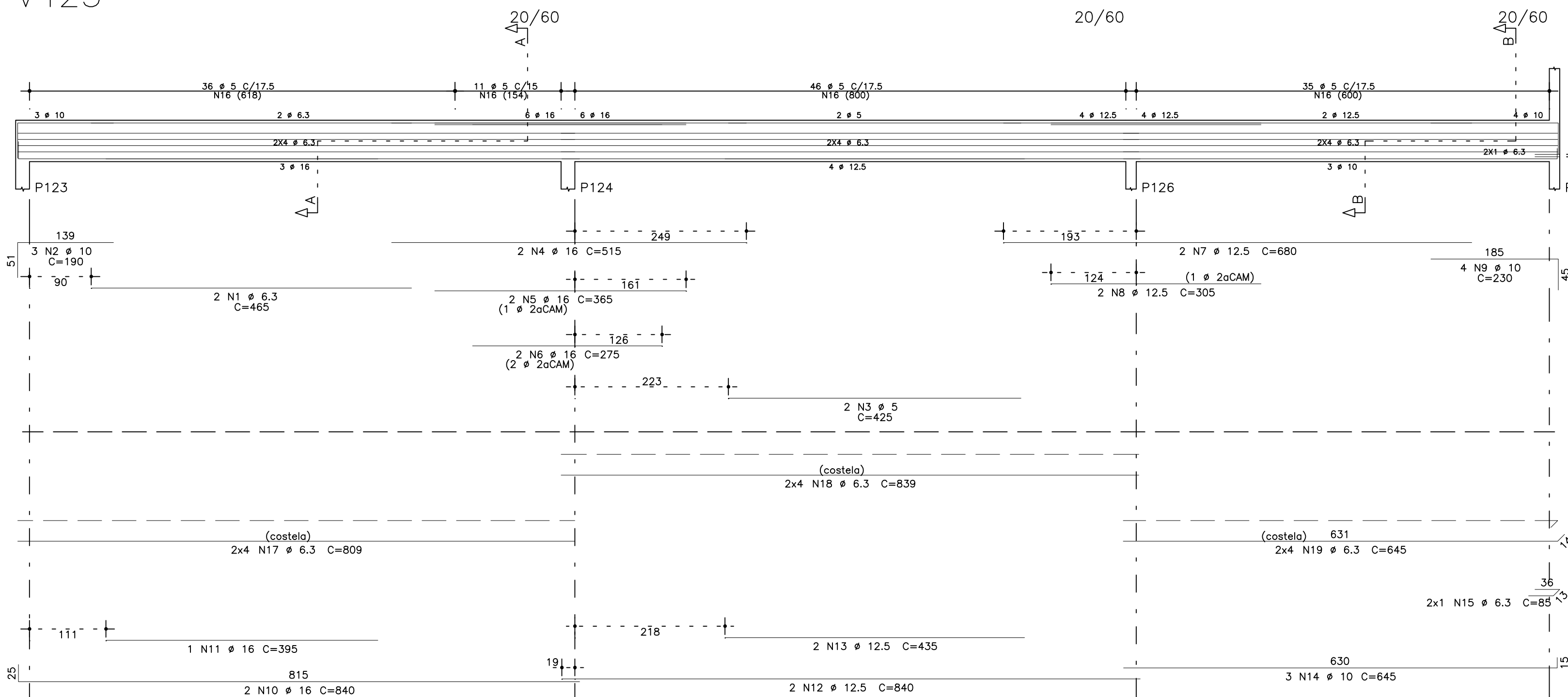
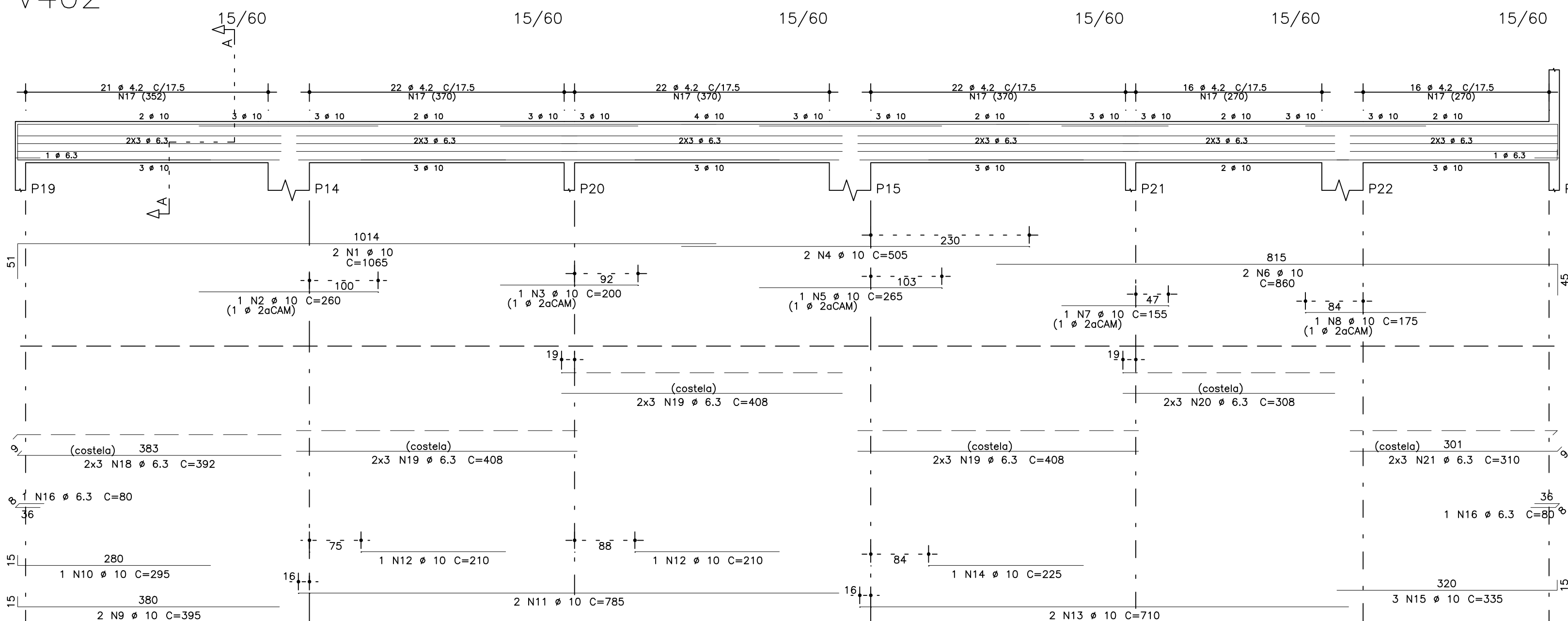


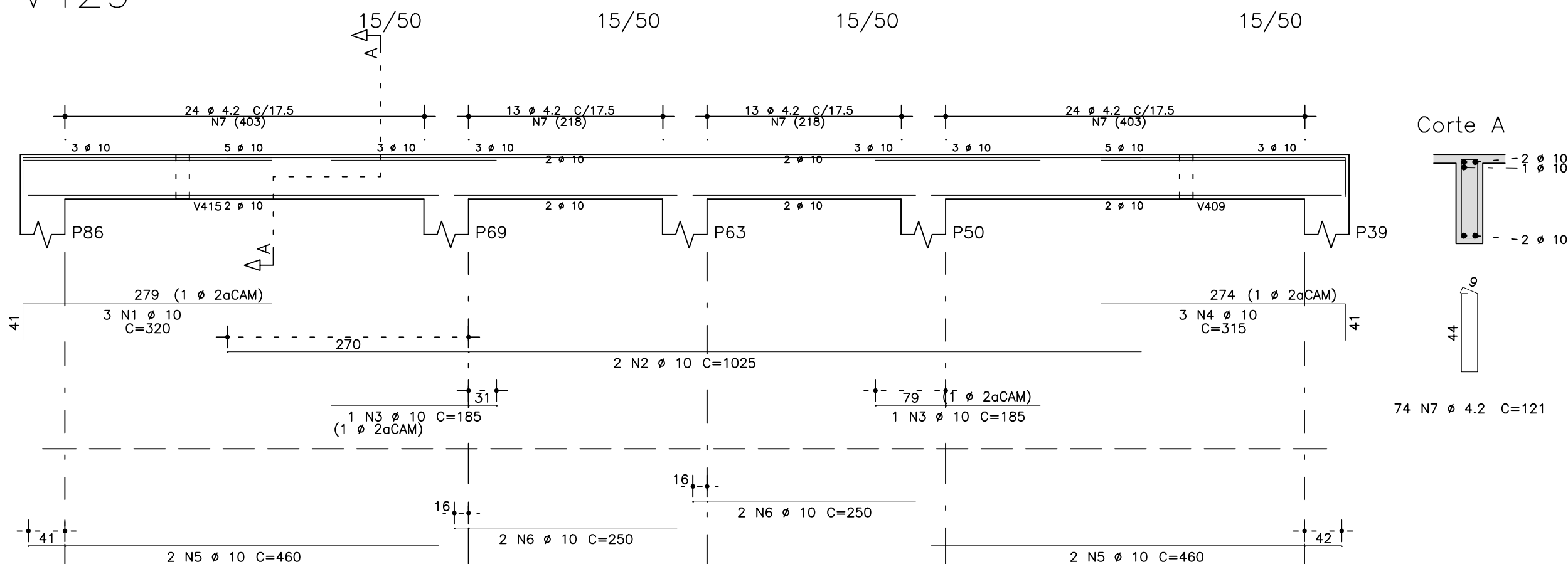
V423



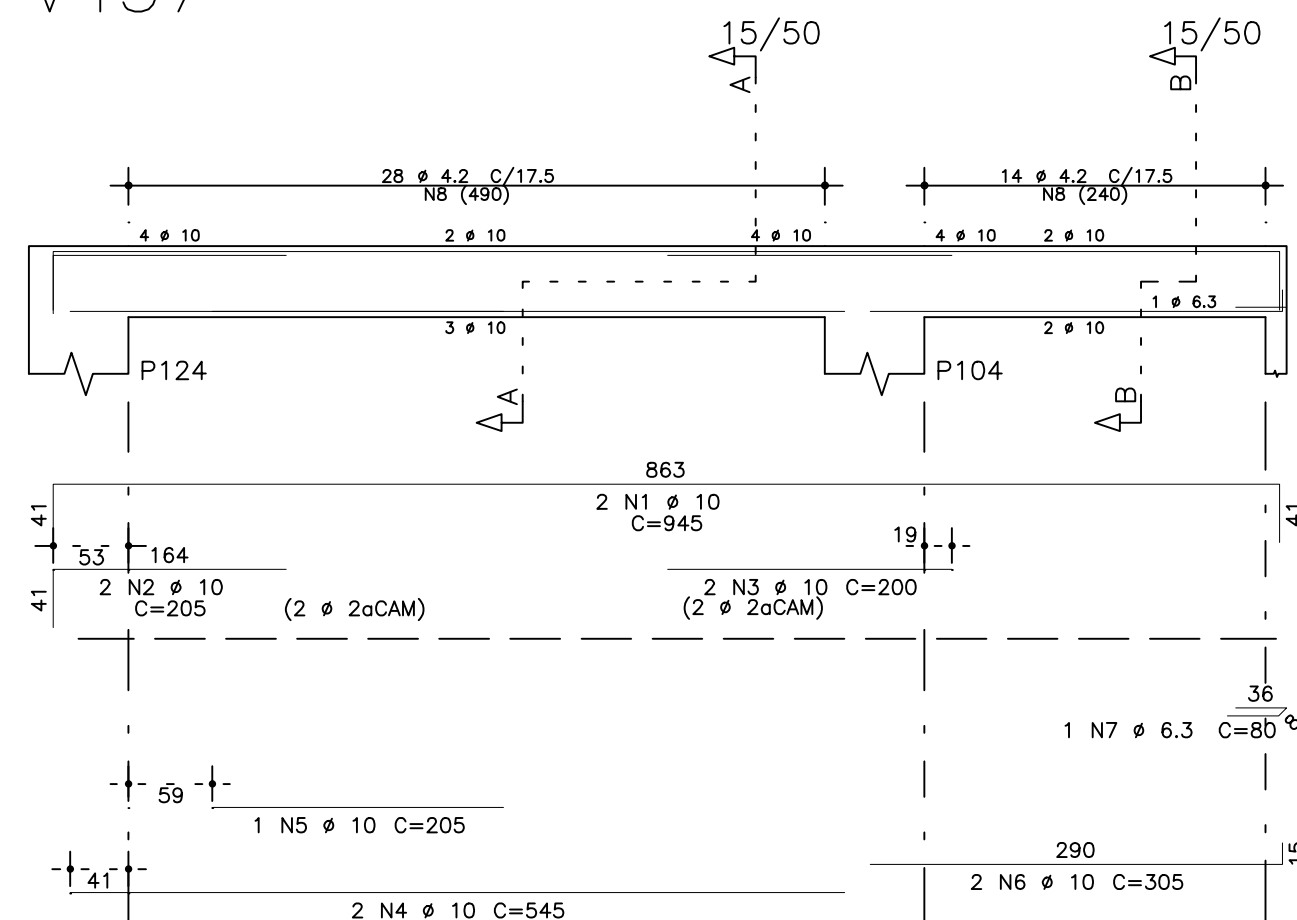
V402



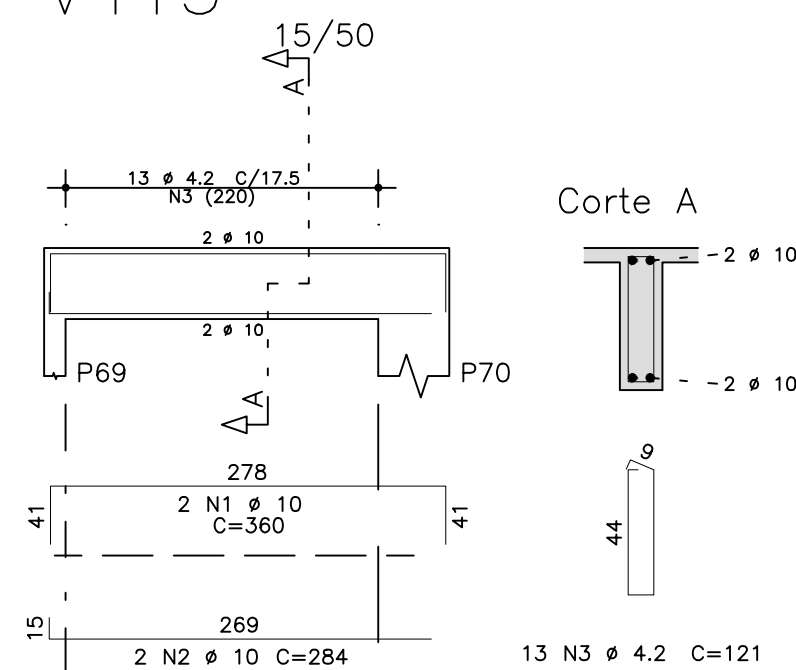
V429



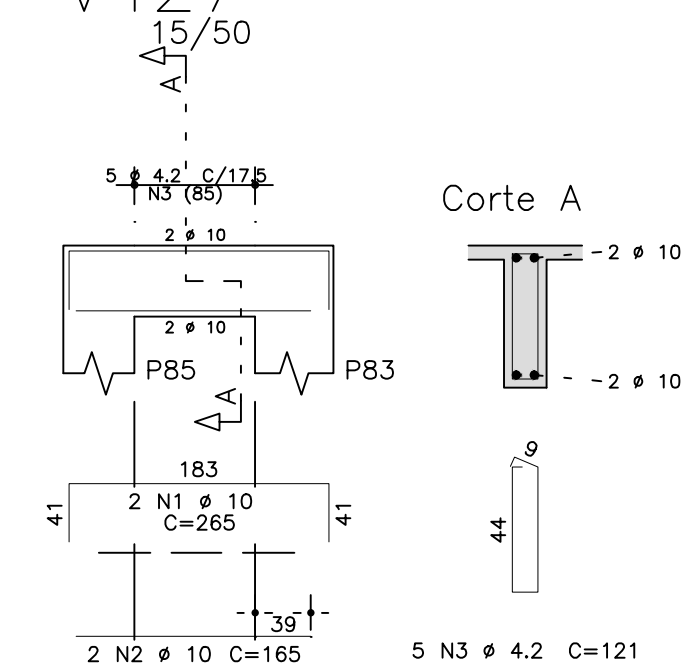
V437



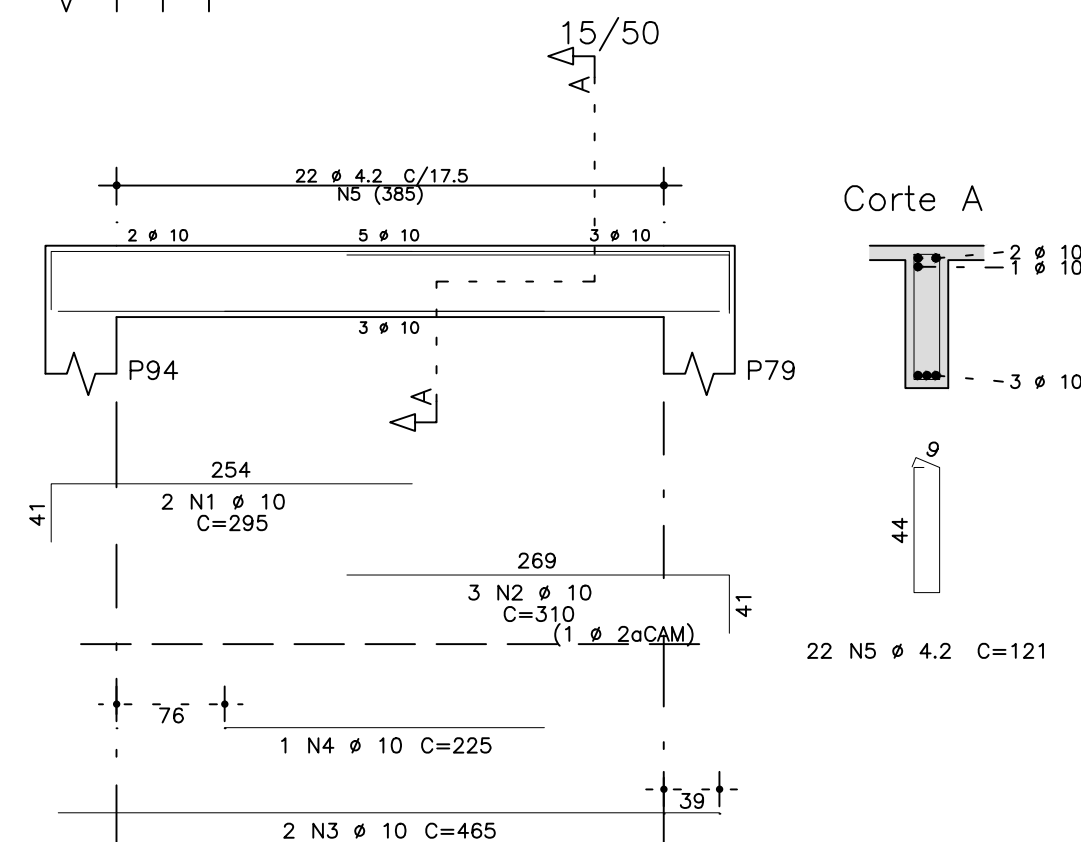
V413



V427



V444



	AÇO	POS	BIT (mm)	QUANT	COMPRIIMENTO	
					UNIT (cm)	TOTAL (cm)
V402						
	50A	1	10	2	1065	2130
	50A	2	10	1	260	260
	50A	3	10	1	200	200
	50A	4	10	2	505	1010
	50A	5	10	1	265	265
	50A	6	10	2	860	1720
	50A	7	10	1	155	155
	50A	8	10	1	175	175
	50A	9	10	2	395	790
	50A	10	10	1	295	295
	50A	11	10	2	785	1570
	50A	12	10	2	210	420
	50A	13	10	2	710	1420
	50A	14	10	1	225	225
	50A	15	10	3	335	1005
	50A	16	6,3	2	80	160
	60B	17	4,2	119	141	16779
	50A	18	6,3	6	392	2352
	50A	19	6,3	18	408	7344
	50A	20	6,3	6	308	1848
	50A	21	6,3	6	310	1860

V413	50A	1	10	2	360	720
	50A	2	10	2	284	568
	60B	3	4.2	13	121	1573

V423					
50A	1	6.3	2	465	930
50A	2	10.0	3	190	570
60B	3	5	2	425	850
50A	4	16	2	515	1030
50A	5	16	2	365	730
50A	6	16	2	275	550
50A	7	12.5	2	680	1360
50A	8	12.5	2	305	610
50A	9	10	4	230	920
50A	10	16	2	840	1680
50A	11	16	1	395	395
50A	12	12.5	2	840	1680
50A	13	12.5	2	135	395
50A	14	10	3	645	1935
50A	15	6.3	2	170	85
60B	16	5	12B	151	1932B
50A	17	6.3	8	809	6472
50A	18	6.3	8	839	6712
50A	19	6.3	8	645	5160


V427					
50A	1	10	2	265	530
50A	2	10	2	165	330
60B	3	4.2	5	121	605

V429	50A	1	10	3	320	960
	50A	2	10	2	1025	2050
	50A	3	10	2	185	370
	50A	4	10	3	315	945
	50A	5	10	4	460	1840
	50A	6	10	4	250	1000
	60R	7	4 2	74	121	8954

V437	50A	1	10	2	945	1890
	50A	2	10	2	205	410
	50A	3	10	2	200	400
	50A	4	10	2	545	1090
	50A	5	10	1	205	205
	50A	6	10	2	305	610
	50A	7	6.3	1	80	80
	60B	8	4.2	42	121	5082

V444	50A	1	10	2	295	590
	50A	2	10	3	310	930
	50A	3	10	2	465	930
	50A	4	10	1	225	225
	60B	5	4.2	22	121	2662

RESUMO AÇO CA 50-60			
AÇO	BIT (mm)	COMPR (m)	PESO (kg)
60B	4.2	357	39
60B	5	202	31
50A	6.3	331	81
50A	10	317	195
50A	12.5	45	44
50A	16	44	69
Peso Total	60B =		70 kg
Peso Total	50A =		389 kg

<div style="text-align: center;">  <p>Schuring & Schuring</p> </div>	<div style="text-align: center;"> <h2 style="margin: 0;">Schuring & Schuring Ltda.</h2> <p style="margin: 0;">Escritorio Técnico B.E.SCHURING – Projetos de Engenharia</p> <p style="margin: 0;">Av. XV de Novembro, 489 – Porto 2o. Andar – Cuiabá MT</p> <p style="margin: 0;">Fone:(065) 321 9959 – Fax:(065) 323 5066 – Email – schuring@terra.com.br</p> </div>
<p>PROJETO:</p>	<p>OBRA:</p>
<p>PROPRIETARIO:</p> <p>PREFEITURA MUNICIPAL</p> <p>VARZEZA GRANDE MT</p> <p>RESP. TEC. EXECUCAO:</p> <p>_____</p>	<p>EMEB ALINO FERREIRA MAGALHAES</p> <p>END.: AV. Verdão esq. c/ Rua "B"</p> <p>PARQUE DO LAGO – VARZEZA GRANDE</p>
<p>AUTORES DO PROJETO:</p> <p>_____</p> <p>Benedito Eiseu Schuring</p> <p>Eng.Civil – CREA 715/D–MT</p> <p>_____</p> <p>Andre Luiz Schuring</p> <p>Eng.Civil – CREA 8697/D–MT</p>	<p>ASSUNTO:</p> <p>DET VIDA COBERTURA</p> <p>PECAS DETALHADAS</p> <p>V402 / V413 / V423 / V427 / V429 / V437</p> <p>V444</p>
<p>PROJETO ESTRUTURAL</p>	<p>FIC: 250</p> <p>DEITOS AUTORES RESERVADOS</p> <p>VERIFICAR MEDIDAS NA OBRA</p> <p>ESCALA: 1:50</p> <p>ARGUIN:</p>
	<p>DATA:</p> <p>FOLHA No.</p> <p style="font-size: 2em;">48</p>